



El Noticiero

Newsletter of the New Mexico Association for Bilingual Education

www.nmabe.net

Vol. 36, No. 3.1

May 2012

Rio Rancho Eighth Grader Wins the 19th Annual NMABE State Spanish Spelling Bee

Three and one half hours and 19 rounds after the competition began, Joana Fernández was crowned champion of the 19th Annual New Mexico State Spanish Spelling Bee sponsored by the New Mexico Association for Bilingual Education, the National Hispanic Cultural Center, the Spanish Resource Center and Santillana, USA.

Fernández and second place winner, Judith Villa, a fifth grader from Sunland Park Elementary in the Gadsden School District, battled it out for 8 rounds before Villa misspelled *pterodáctilo*. Joana then stepped up to the microphone and very confidently spelled that word and then correctly spelled conceptualizar to win the competition.

The third place winner was Erika Zambrano, an eighth grader from John Adams Middle School (Albuquerque Public Schools), in fourth place was Michaela Vigil Luján, a seventh grader from Memorial Middle School (Las Vegas City Schools) and rounding out the top 5 was seventh grader Charlyna Gonzales from Peñasco Middle School.

All five are now eligible to compete in the 2nd Annual Santillana, USA National Spanish Spelling Bee which will be held on Saturday, July 21, 2012 at the National Hispanic Cultural Center. For more information please contact David Briseño, event coordinator at 505-238-6812 or email him at nmabe@sudenlink.net



First Place: Joana Fernández



Second Place: Judith Villa



Third Place: Erika Zambrano



Fourth Place: Michaela Vigil Luján



Fifth Place: Charlyna Gonzales

¿¿Need to pass Prueba??

New Mexico Highlands University

offers YOU—

PROGRAMA DE INMERSION EN ESPAÑOL

Preparación para

-Prueba-

9 - 16 de junio, 2012

El programa consiste de clases en :

Lectura en el
Contenido Escolar

Composición en el
Contenido Escolar

Ortografía y Acentuación

Composición en el
Escolar

Día y noche, noche y día...
hasta las comidas...

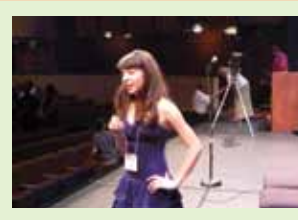
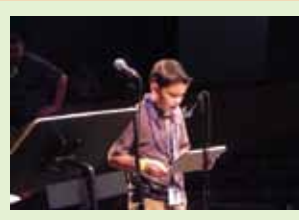
presentaciones, canciones,
videos, chistes,
adivinanzas y más...

Te prometemos...¡¡ todi-ti-ti-to
en español!!

Para mayor información comuníquese con la Dra. Loretta Salazar al (505) 454-3535, lsalazar@nmhu.edu o con la Dra. Alice Menzor al (505) 426-2204, menzor_alice@nmhu.edu



The Second Annual National Spanish Spelling Bee



July 21, 2012

The National Hispanic Cultural Center
Albuquerque, New Mexico

Students

Teachers

Parents

Bilingual Educators

Administrators

Plan on attending!

The New Mexico Association for Bilingual Education (NMABE) along with the Alliance for Multilingual Multicultural Education (AMME) and Dual Language Education of New Mexico (DLENM), Bee sponsors and other organizers, invite you to the second annual National Spanish Spelling Bee Competition in Albuquerque, New Mexico.

For more information, contact NMABE Executive Director and AMME Board member David R. Briseño P. O. Box 5190 ... Clovis NM 88102-5190 ... www.nmabe.net ... Phone: 505-238-6812 ... Fax: 575-769-0742 ... Email: nmabe@suddenlink.net



El Noticiero is published monthly by Language Magazine and provides information on current affairs concerning the education of language minority persons in New Mexico and the United States. P. O. Box 5190, Clovis, New Mexico 88102-5190, www.nmabe.net

Editor :Mary Jean Habermann López maryjeanhl@msn.com Copy Editor: Kathryn Sherlock kcsherlock43@yahoo.com

2011 - 2012 NMABE BOARD

Jesús Moncada, *President*; Florence Acque, *President-Elect*; Emilia Vigil, *Past President*; Dr. Rubén Córdova, *Vice President*; Dilia Manzanares, *Secretary*; Javier Arellano, *Treasurer*; Vacant,

NMPED Rep.; Mercedes Sandoval, *Parent Rep.*; Jesse Winter, *Dual Language Ed. of NM Rep.*; Rosalinda Carreón Altamirano *So. Consortium*; Vernon Jaramillo, *No. Consortium*; Vacant, *Pueblo Rep.*; Louise Benally, *Navajo Rep.*; Maureen Olson, *Apache Rep.* STAFF: David Briseño, *Executive Director*; Mary Jean H. López, *Associate Director*.

PUBLICATION SCHEDULE

No. 36:1 Fall 2011: October (Back to School Edition); No. 36:2 Winter 2012: January (Board News, Bilingual Education Day, Call to Action); No. 36:3 Spring 2012: April (Spring Conference Edition); No. 36:4 Summer 2012: July (Summer Activities) Monthly Inserts/Wraps with Language Magazine